

V Y B E

IN A CLASS OF ITS OWN.



VYBE 43

TOO **SEXY** TO BE A CATAMARAN.  
TOO **CAPABLE** TO BE ANYTHING ELSE.

Monohulls trade space for style. Catamarans trade style for space. Both make you choose.

VYBE doesn't.

Twin asymmetric hulls. Standard marina berth. Two master cabins. 53 knots. The presence of a monohull, the volume and performance of a catamaran — the best of both worlds.

A new category. Built because the existing ones weren't enough.

*Cantiere Del*  
V Y B E

# THE RANGE



VYBE 43



VYBE 53



VYBE 66



VYBE 77



VYBPE 43



VYBE 43



VYBE 43





VYBE 43



VYBE 43



VYBE 43



VYBEE 43



VYBE 43



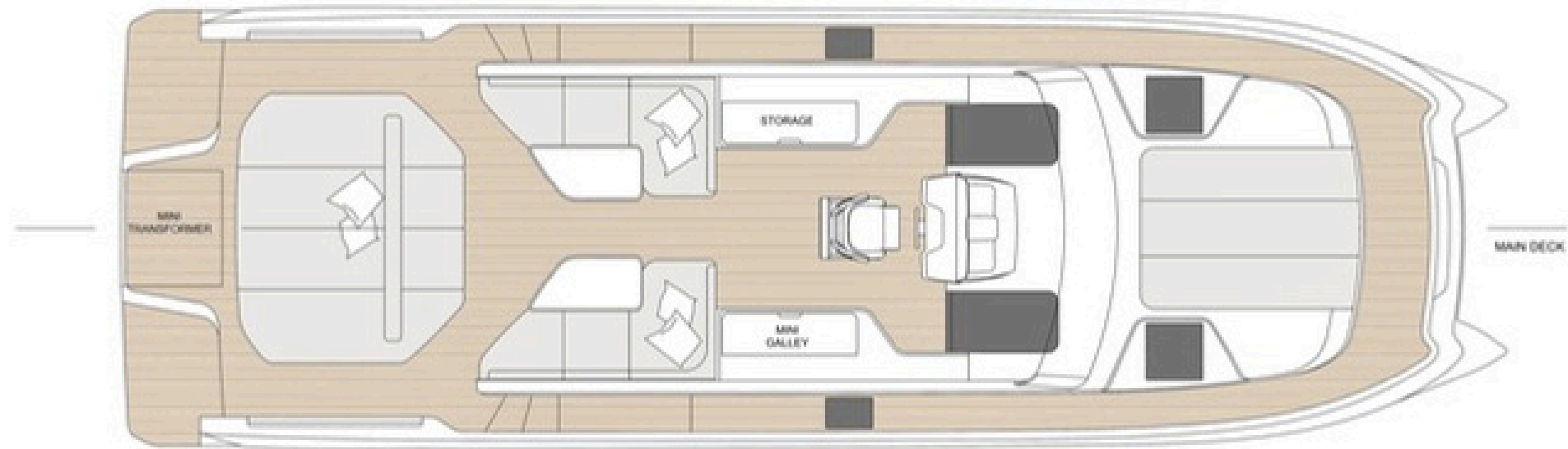
VYBE 43



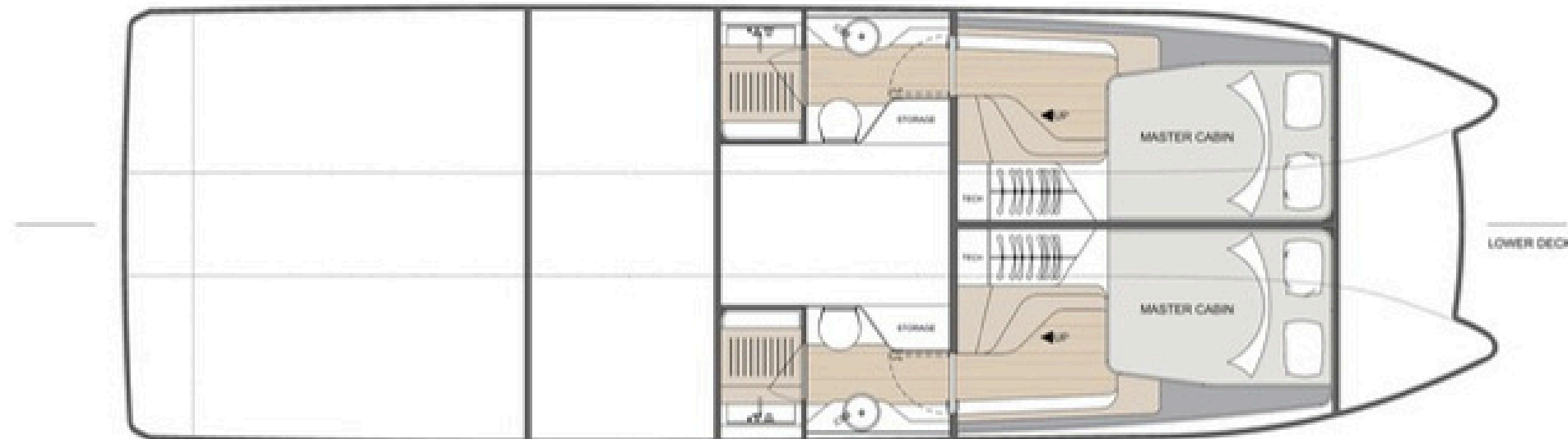
VYBE 43



VYBE 43



TWO MASTER CABINS.  
TWO ENSUITE BATHROOMS.













---

SELECTED MATERIALS.  
PERSONAL FINISHES.

---



FOGLIZZO  
1921

GISSI



---

*INDUSTRY LEADERS.  
SEAMLESSLY INTEGRATED.*

---

 **DOMETIC**

**GARMIN®**

**VOID**

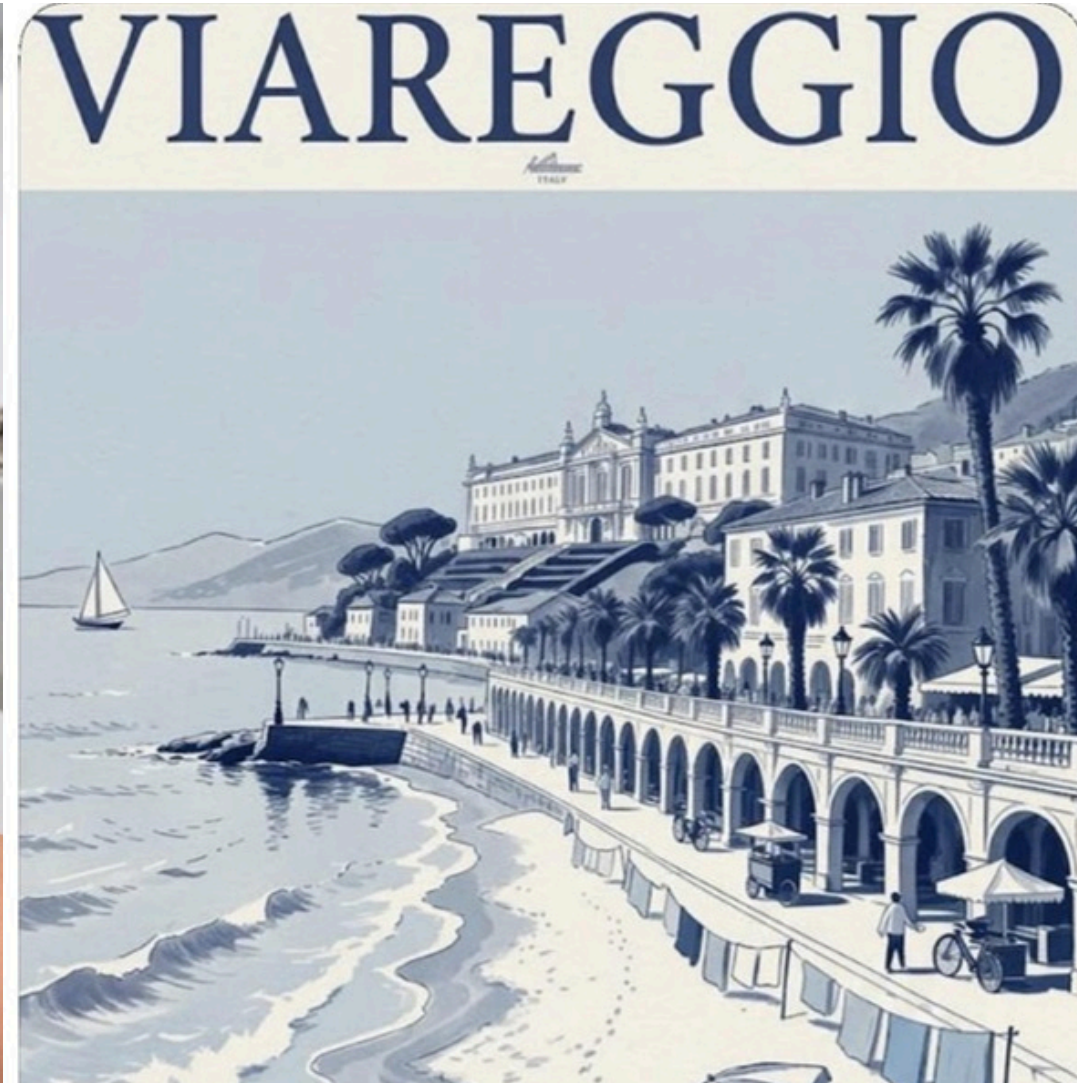


V Y B E 43

NOT WHERE IT STARTED.  
*WHY IT HAD TO EXIST.*

# BUILT IN VIAREGGIO

WHERE STANDARDS ARE SET



# EFFICIENCY.

## OUR VISION OF SUSTAINABILITY.



CRUISING SPEED

**3.4L** /NM

THEORETICAL CONSUMPTION



MAX SPEED

**3.9L** /NM

THEORETICAL CONSUMPTION

OTHER BOATS OF COMPARABLE SIZE

> **4.3 L**/NM AT CRUISING SPEED

~ **5 L**/NM AT MAX SPEED

UP TO 22% LOWER FUEL CONSUMPTION

## REAL PERFORMANCE DOESN'T NEED FOILS.

While parts of the industry rely on foil-assisted systems that depend on ideal conditions and lose effectiveness as marine growth builds up, VYBE performance is engineered directly into the hull itself.

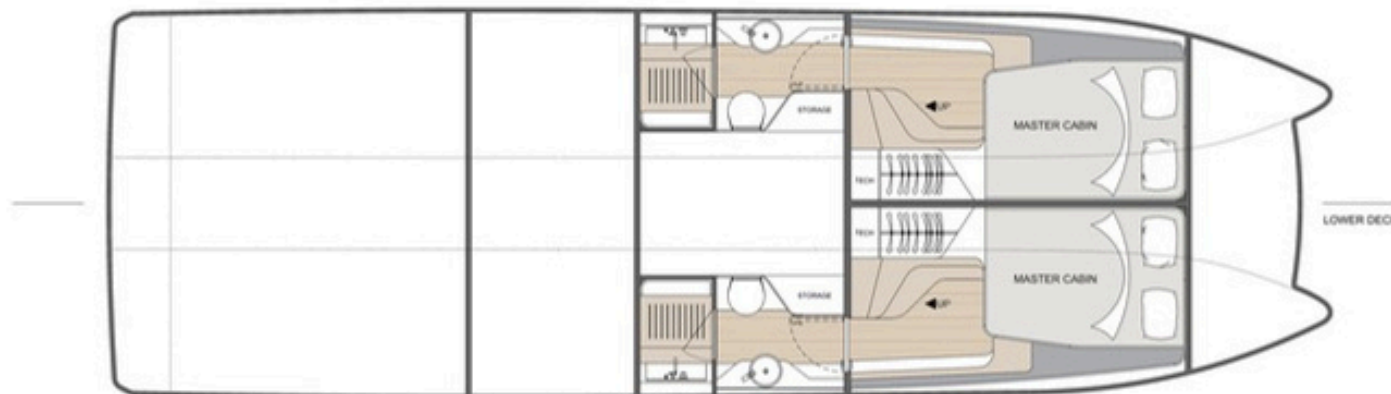
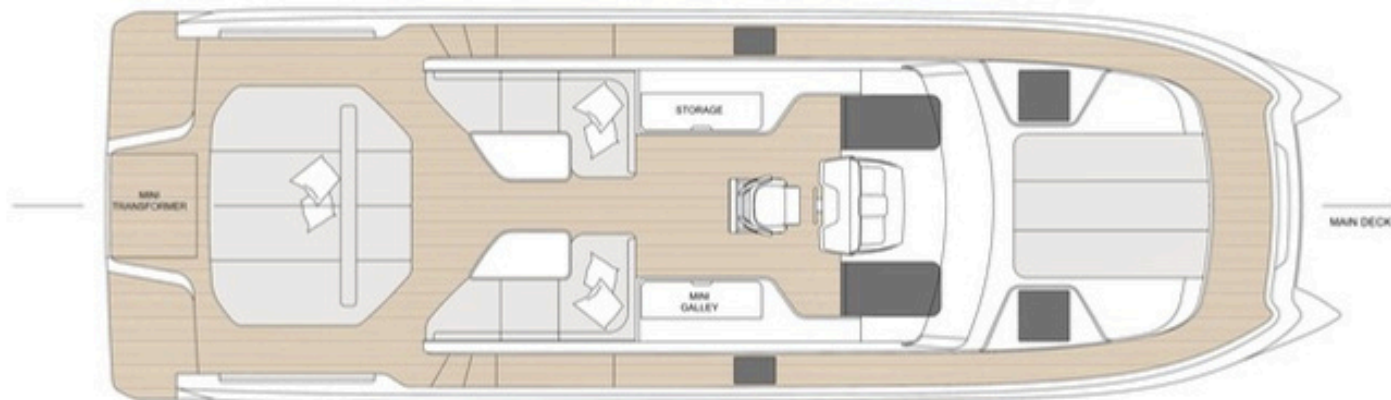
Its twin asymmetric deep-V hulls, triple-step configuration, and lightweight composite construction reduce drag naturally — delivering greater stability, smoother cruising, and lower fuel consumption without additional complexity.

# V Y B E 43



## SPECIFICATIONS

Length Overall (L.O.A) :	12,67 m
Max. Beam:	3,97 m
Draft:	1 m
Fuel Capacity:	1900 L
Fresh Water Capacity:	350 L
Black Water Tank Capacity:	112 L
Number of passengers:	<b>14 in B Category</b>
Naval Architect:	<b>Adam Younger</b>
Designer:	<b>Abbasli Design</b>



## ENGINE OPTIONS:

2 x Volvo Penta D6 480hp (Estimated Speed 46 knots at light load +/- 5%).

2 x Mercury V12 600hp (Estimated Speed 53 knots at light load +/- 5%).

# TECHNICAL OVERVIEW

ENGINEERED WITH PRECISION.  
BUILT WITHOUT COMPROMISE.

## HULL STRUCTURE

- Vinylester infused composite sandwich construction
- Carbon fiber reinforcements in key structural areas
- Longitudinal and transverse framing for maximum rigidity

## STANDARD EQUIPMENT

- Mase 6.5kVa generator
- Dometic air conditioning (32,000 BTU)
- Opacmare hydraulic gangway
- Garmin premium navigation system
- VOID sound system
- Quick double bow thruster
- Starlink satellite internet

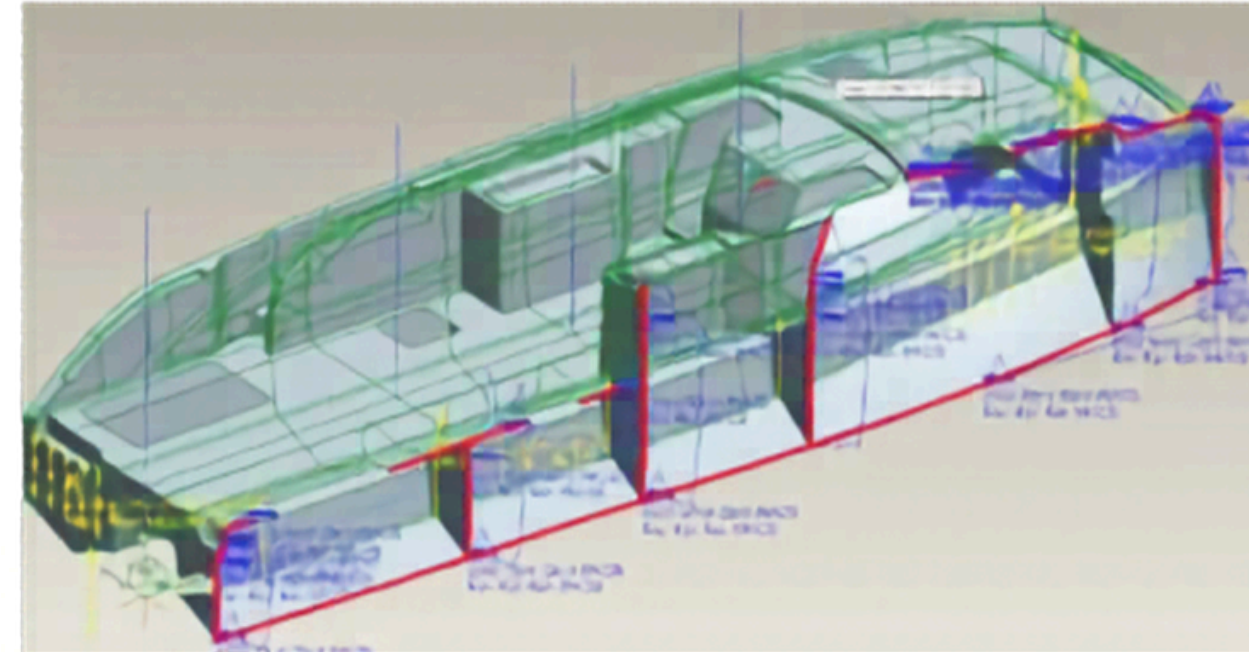
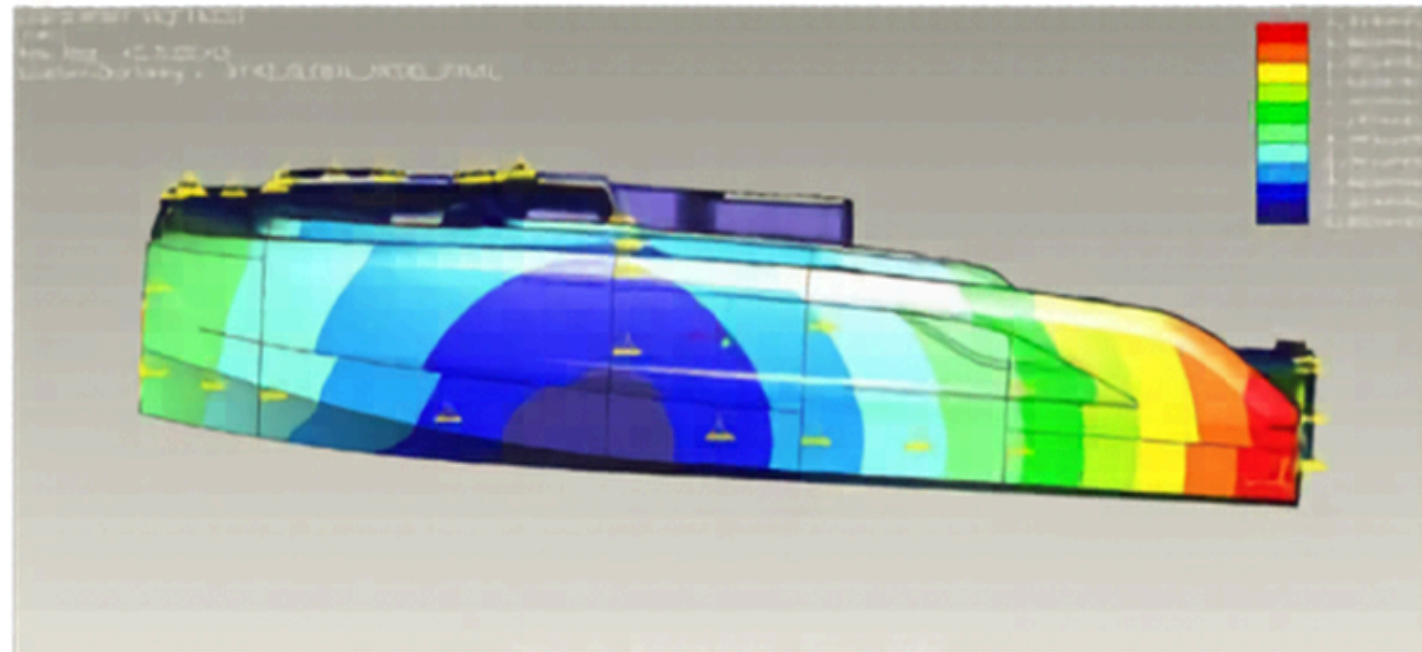
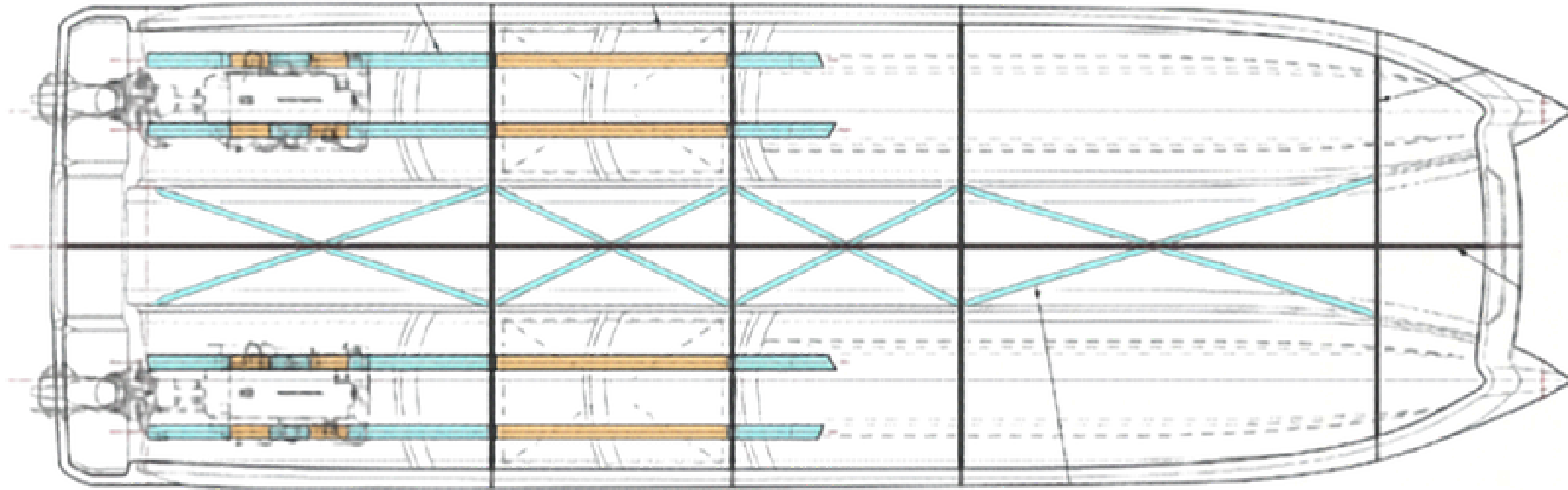
## HULL DESIGN

- Twin asymmetric deep V hulls
- Triple steps to reduce hydrodynamic drag
- Aerodynamically optimized tunnel for "air cushion" lift effect

## HARD TOP & INTERIOR STRUCTURE

- Carbon fiber hardtop (infused)
- Lightweight carbon infused flooring and partitions

# STRUCTURAL DRAWINGS

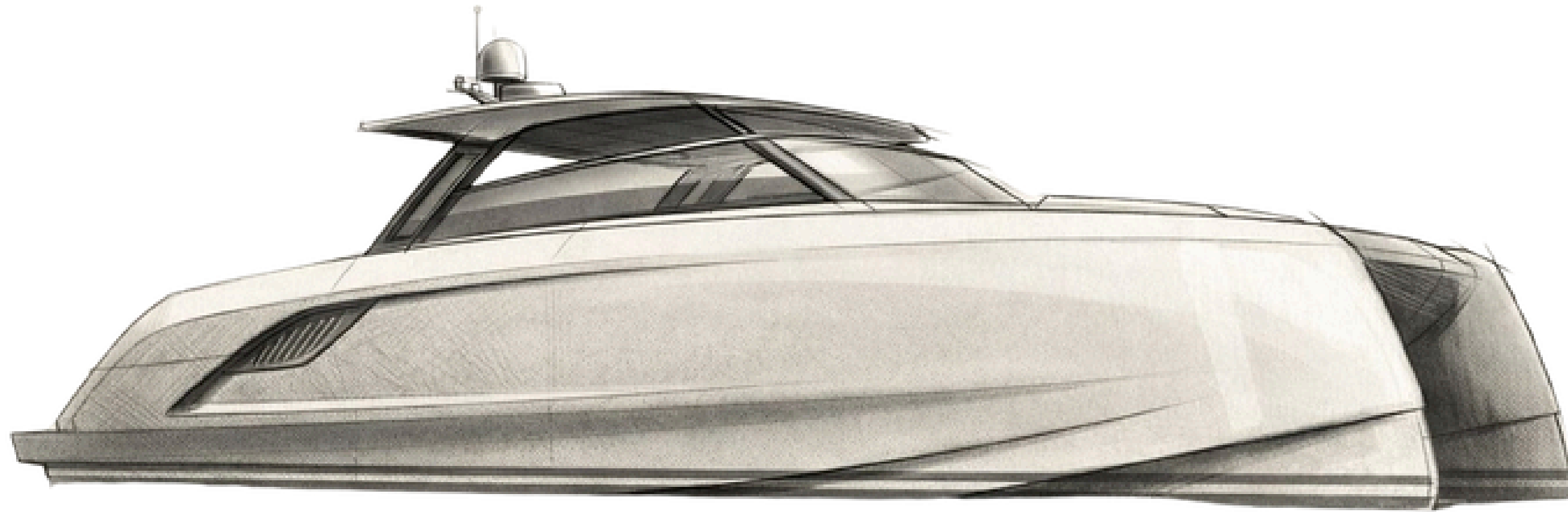


HULL DESIGN



BY ADAM YOUNGER.

EXTERIOR & INTERIOR  
DESIGN



BY ABBASLI DESIGN.

V Y B E 43

*Cantiere Del*  
VYBE

HI@VYBE.YACHTS - WWW.VYBE.YACHTS  
CANTIERE DEL VYBE S.R.L VIA CARRIONA 201, 54033 CARRARA (MS), ITALY